

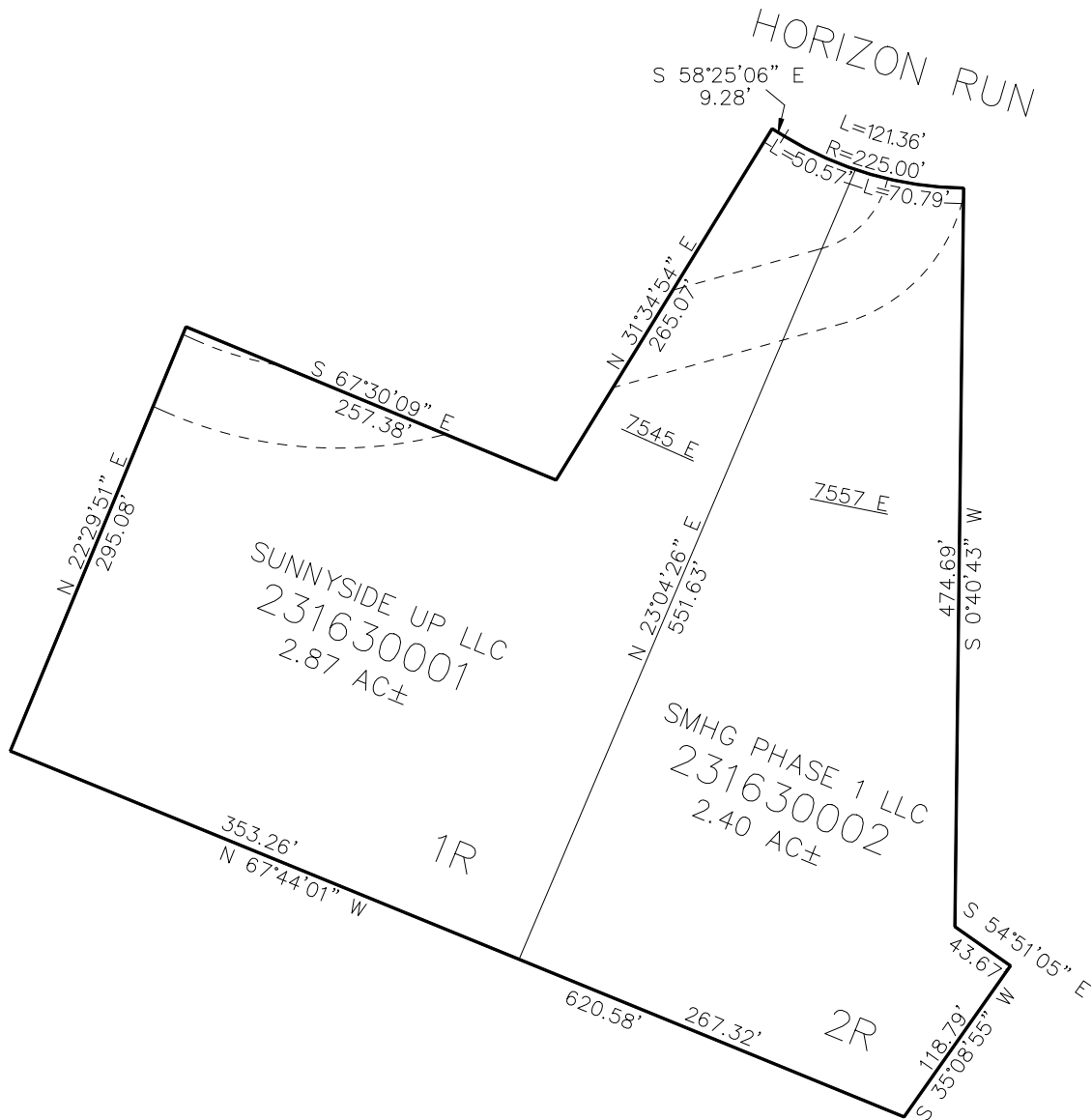
PART OF THE SE.1/4, OF SECTION 6, T.7N., R.2E., S.L.B. & M.
HORIZON RUN RANCHES AT POWDER MOUNTAIN PH 1

IN WEBER COUNTY

TAXING UNIT: 546

SCALE 1" = 60'

SEE PAGE 12-1



10' UTILITY & DRAINAGE EASEMENTS EACH
SIDE OF PROPERTY LINES AS INDICATED
BY DASHED LINES EXCEPT AS OTHERWISE
SHOWN.

FOR COMPLETE ENC DATA SEE
ORIGINAL DEDICATION PLAT IN
BOOK 90, PAGE 06 OF RECORDS.